

smatrix

Installation guide

Applicable for smatrix for Windows - Version 1.9

All rights reserved especially (also in extracts) for translation, reprinting, reproduction by copying or other technical means.

dawin GmbH
Seligenthaler Str. 5
53721 Siegburg
Germany



1	Introduction.....	2
2	Software Download.....	2
2.1	Download Server	2
2.2	Credentials.....	3
2.3	What to download.....	3
2.4	Procedure	4
3	Installation.....	4
3.1	Prerequisites.....	4
3.2	New installation.....	5
3.3	Upgrade from earlier versions.....	6
3.3.1	Backup configuration data	6
3.3.2	From Version 1.5.x.....	6
3.3.3	From Version 1.7.x:	6
3.3.4	From Version 1.8.x:	7
3.3.5	Use configuration data backup	7
4	License Activation.....	7
4.1	General	7
4.2	Prerequisites.....	7
4.3	Procedure	7
5	Getting started	8
6	Appendix.....	10
6.1	Access “C:\ProgramData\smatrix”	10
6.2	Uninstalling.....	11



1 Introduction

Dear customer,

Firstly, we want to appreciate your preference and trust for choosing our software smatrix and give you a brief insight into the origins of it.

Founded in 1994, dawin ever since focused on the development of humane software. Humane software, for us, means that technology takes the back seat, while the applications or machines do the work reliably. We also put the user with all her/his human needs and capabilities at the heart of our concerns.

smatrix is a one-of-a-kind speech recognition software for data collection by voice that operates fully offline. The official market launch was in 2017, the development of the software already started in 2014.

smatrix listens to your voice - and inserts the assessment characteristics it hears directly into your table. Now slipping between rows in the table and having to make corrections is a thing of the past. You also avoid having to constantly switch focus, which noticeably optimizes your assessment process. It is not just smart - it's secure and efficient too. In a speech dialog, the software guides you through the trial, while collecting data.

smatrix keeps your hands and eyes free - you concentrate on the essentials of your work.

So, let's begin:

To use smatrix for Windows you need to perform the following steps:

- Download the software installation packages - section 2
- Install the installation packages – section 3
- Activate license – section 4

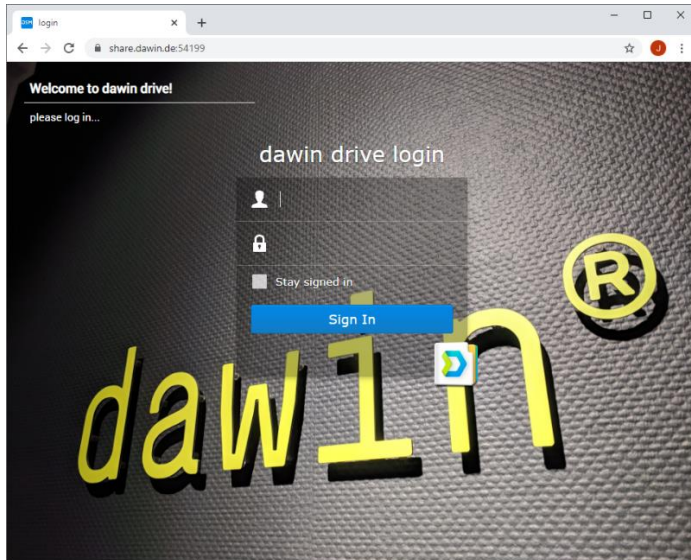
2 Software Download

2.1 Download Server

Please go to the download server <https://share.dawin.de:54199> using a web browser like Chrome or Edge.

2.2 Credentials

Please take the credentials from the email to login and select “Sign In”



2.3 What to download

- SmatrixSetup_<version>.msi:
This is the installation package of the smatrix program. E.g., SmatrixSetup_1.9.0006.msi
- Language Packs: LanguagePack_<language>_<version>.msi
Each installer contains data that is required for speech recognition and synthesis for one language.
 - <language> in the file names are 3 letter codes that are defined in the following table:

eng	English (UK)
enu	English (US)
eni	English (India)
ena	English (Australia)
ged	German
frf	French
dun	Dutch
spe	Spanish (Spain)
spm	Spanish (Mexico)
ptb	Portuguese (Brazil)
ptp	Portuguese (Portugal)
iti	Italian

- The required language pack <version> for smatrix 1.9.x is **2.1.0** (same as for smatrix 1.8.x)
- Only the required languages need to be downloaded and installed. E.g., if you want to run English (US), you need to download LanguagePack_enu_2.1.0.msi

2.4 Procedure

- Download the setup files for smatrix and the language packages to your device:
 - Right-click on the file
 - Choose 'download'
- By default, your browser writes downloaded files to the "Downloads" folder.

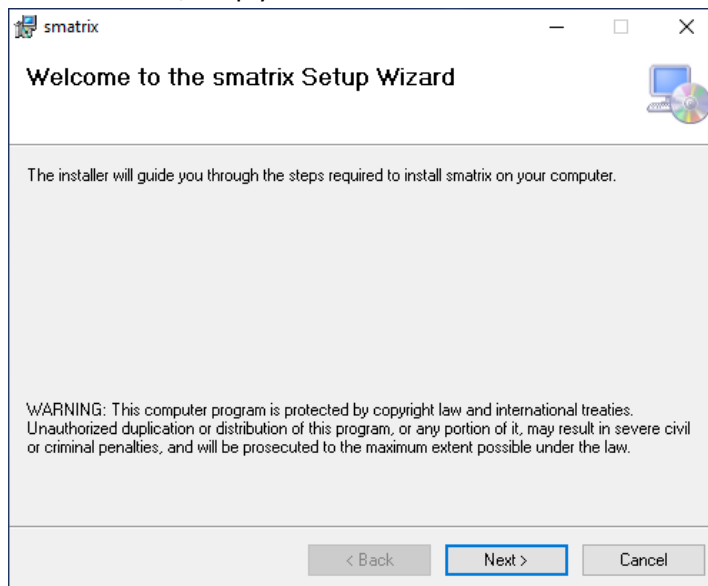
3 Installation

3.1 Prerequisites

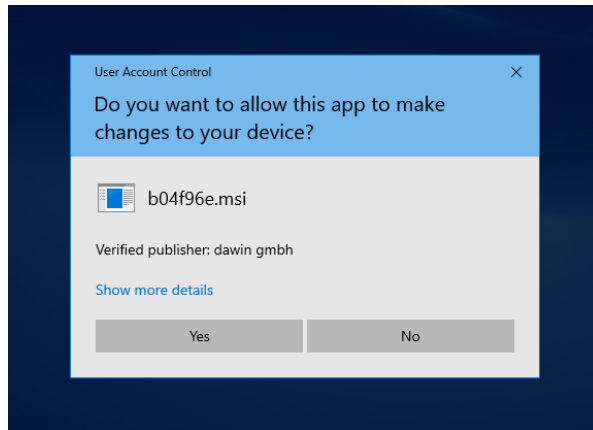
- Required permissions: At least local admin account for installation (UAC: user account control)
- Windows 8.1 or 10.
NOT Windows 10 S!
- Excel 2013 (or later)
- We also recommend having at least 4GB of RAM for quick and smooth operation.

3.2 New installation

- If you have an earlier version of smatrix installed, please follow the step from 3.3 before continuing with the installation!
- Programs to be installed (see 2.3 for reference)
 1. smatrix main program
 2. Language packs
- Procedure:
 1. First download the setup files, do not run the setups in the online drive!
 2. Install smatrix first, followed by the language packages. For each installer, follow steps 3-5.
 3. Double-click the installer.
 - If Windows SmartScreen Defender marks smatrix or the language packs as a "non-certified source", please
 - click on "Further information" and
 - "Install anyway"
 4. In the installer, simply click "Next" twice:



5. Windows-UAC window will overlay the screen. Agree to the installation choosing “Yes”.



3.3 Upgrade from earlier versions



3.3.1 Backup configuration data

- Please make sure to have access to C:\ProgramData\smatrix, see 6.1
- If you are sure, that only files in “[C:\ProgramData\smatrix\data](#)” were customized, no backup is required. Files in this folder will not be removed or overwritten when smatrix is un- / re-installed. If you are not sure, please continue with the backup.
- Make a backup of the folder “[C:\ProgramData\smatrix\templates](#)” and all files within. You can do that by simply copying the folder to another location on your PC (e.g., to the Desktop).

Note: This folder is reset when smatrix is un-/re-installed! Any new files or modification of existing files will be lost.

3.3.2 From Version 1.5.x

- Backup configuration data as described in 3.3.1.
- Uninstall language packs and smatrix works as for any other program. Refer to 6.2 for details.
 - Language packs
 - smatrix

	Nuance Language Pack British English	117 MB 17.11.2020
	smatrix	19,7 MB 17.11.2020

- After uninstalling, please follow all steps from 3.2 New installation.

3.3.3 From Version 1.7.x:

- Backup configuration data as described in 3.3.1.
- Uninstall Language packs.

Note that smatrix does not need to be uninstalled, it will automatically be replaced by the installation of the new version.

- After uninstalling, please follow all steps from 3.2 New installation.

3.3.4 From Version 1.8.x:

- Backup configuration data as described in 3.3.1.

Notes:

- Language Packs are identical between 1.8.X and 1.9.X versions of smatrix. There is no need for a change - you can continue using the already installed ones.
 - Installing smatrix 1.9.X will automatically replace prior installations of smatrix 1.8.X. Thus, it is not required to uninstall smatrix 1.8.X.
- Install the latest smatrix version following the procedure from 3.2, only for smatrix.

3.3.5 Use configuration data backup

Once the smatrix installation is complete, the configuration data from the backup can be applied to smatrix. Please do the following for each headers/values configuration file:

- If “C:\ProgramData\smatrix\data” does not have a file with the same name, copy the backup file to this location.
- If “C:\ProgramData\smatrix\data” does have a file with the same name, leave the file unchanged! The file in the data folder was used also by the previous version of smatrix. Ignore the backup file.

Note: Newer versions of smatrix often have other example data in the configuration files located in “C:\ProgramData\smatrix\templates”. If you want to configure examples given in the user manual, you manually need to merge the files with your modified ones from the data folder and write it to the data folder.

4 License Activation

4.1 General

- When starting smatrix for the first time, you have to activate your license key.
- Each key can be used on only one device. Please contact us if a smatrix license is to be transferred to another device.

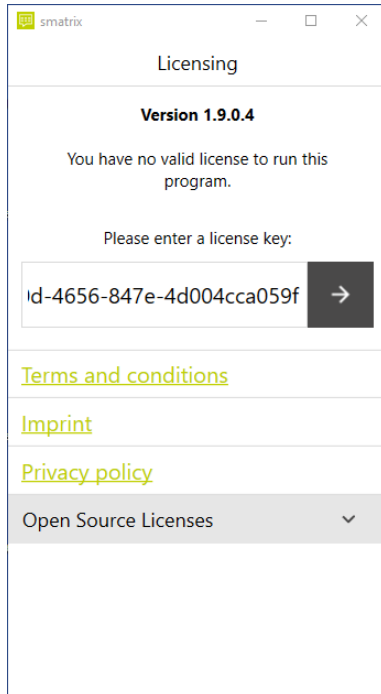
4.2 Prerequisites

- Internet access is required for license activation.

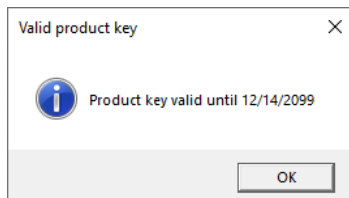
4.3 Procedure

- Start smatrix. It will show a licensing screen asking to enter a valid license.

- Enter the license key you received via email and select the arrow button:



- The activation will be confirmed with a popup:

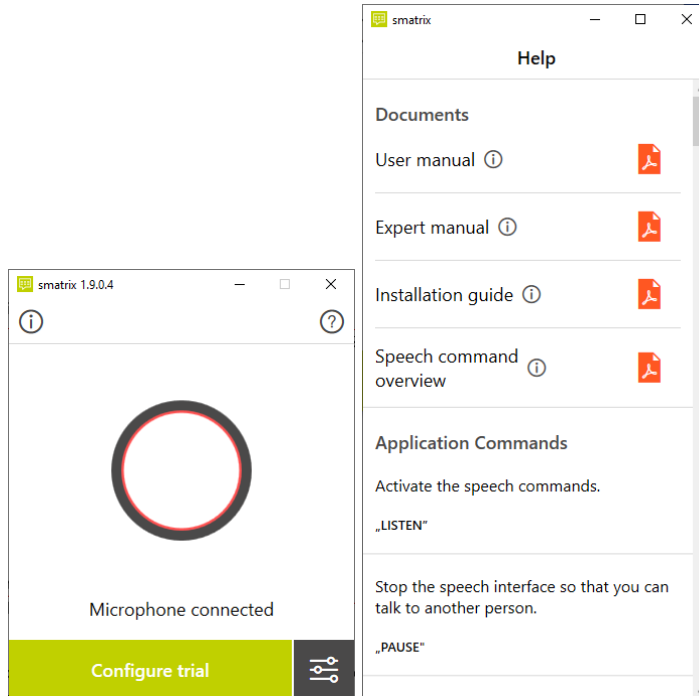


- Select “ok” to acknowledge the message. smatrix will start.

5 Getting started

- After successful installation you will have the following sources of information:
 - User manual: Gives an overview on smatrix and its features. The user is instructed how to interact with smatrix. This is also the best document for new users!
 - Expert manual: Gives details on how to customize smatrix. This is intended for everybody concerned with setting up trials. It contains information on e.g., how to create own trait names and value ranges.
 - Speech command overview: A plain list of speech commands without additional explanations. It is intended as a reminder to look up the commands.
 - All these documents are available at:
 - “C:\ProgramFiles (x86)\smatrix\doc” (if you have an x64 PC)
 - “C:\ProgramFiles\smatrix\doc” (if you have an x86 PC)
 - smatrix also has a built-in help section, that can be accessed by clicking the question mark in the upper right corner (see below). It contains links to the above documents

and an in-app list of available speech commands, descriptions, and examples.

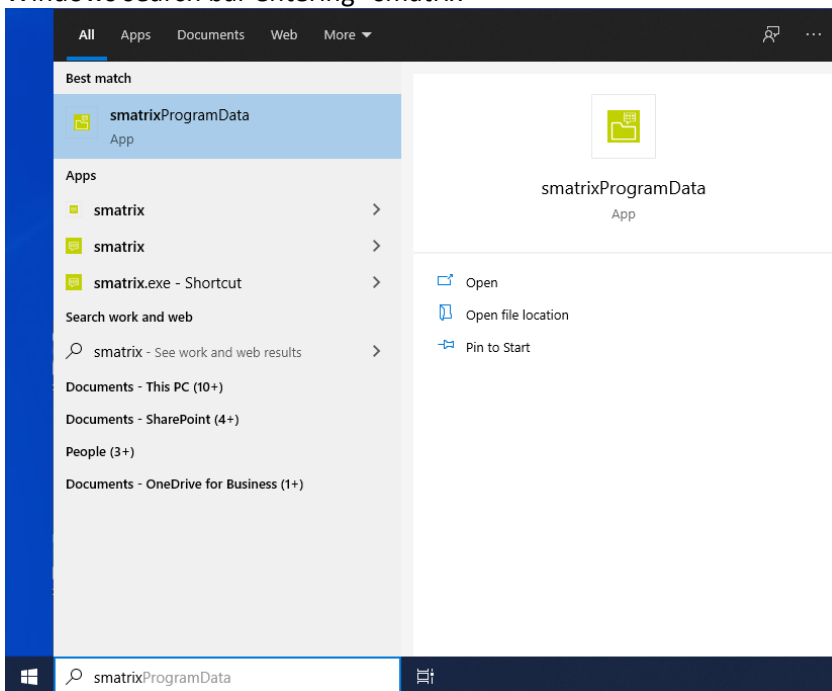


- You can also find further information in our [FAQ section](#) on the smatrix webpage.
- For support questions please contact <mailto:support@smatrix.systems> or use the chat on <https://smatrix.systems/en>.

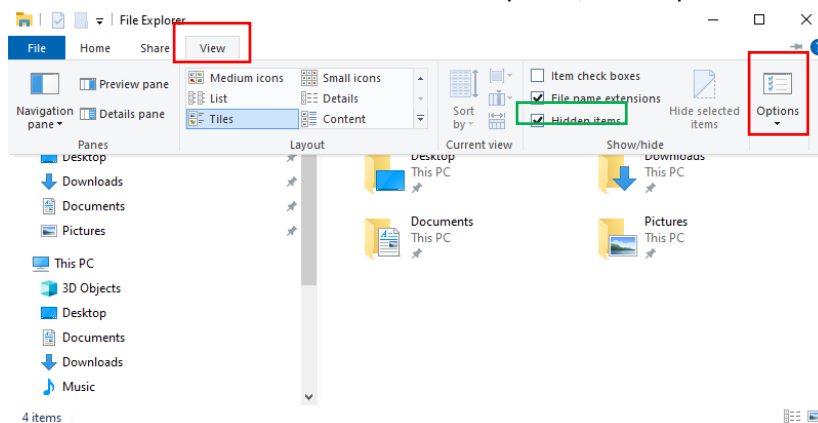
6 Appendix

6.1 Access “C:\ProgramData\smatrix”

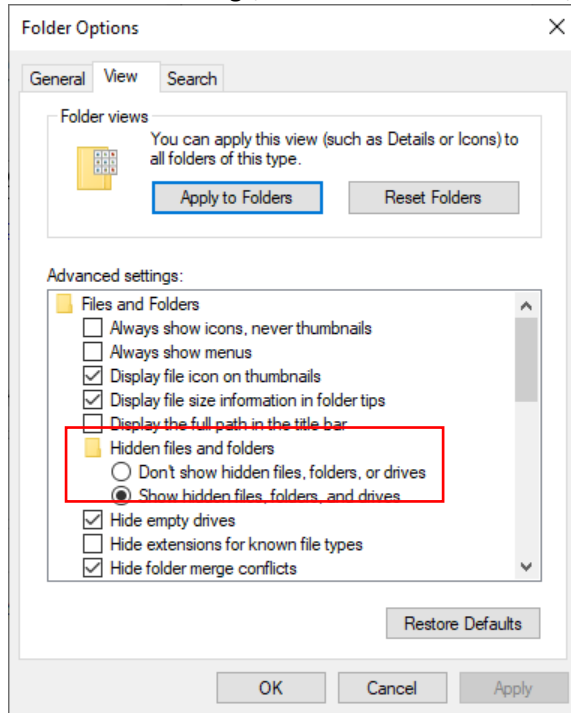
- Following the installation, please make sure that the file path is visible and that you have access to it. User access to this folder is vital since all customization data of smatrix is stored in this path.
- smatrix will install a link to the mentioned folder ProgramData. You can find it using the Windows search bar entering “smatrix”



- If the folder is not visible:
 - click on the “View” tab in the Windows explorer, and “Options”



- in Advanced settings, select “Show hidden files, folders, and drives”.



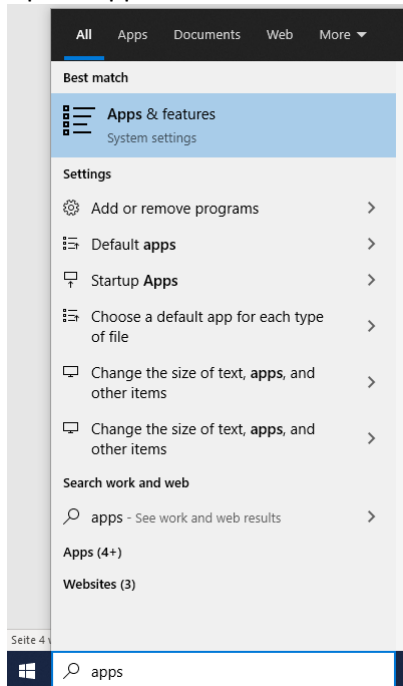
- If you do not have the permissions to access the folder ProgramData or any of the folders/files within, please contact your system admin to grant these permissions.

6.2 Uninstalling

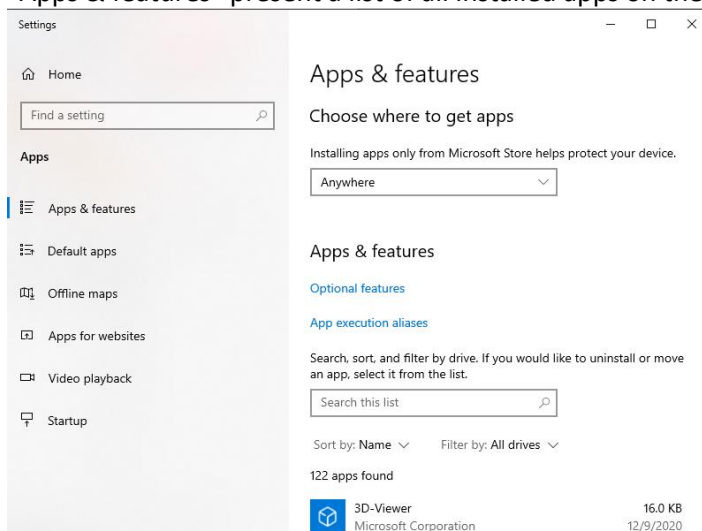
To uninstall smatrix or one of its language packs, enter the “Apps & features” system settings.

- Select the search bar and type “apps”

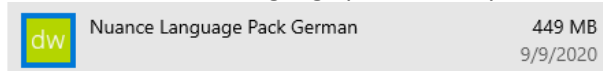
- Open “Apps & features”



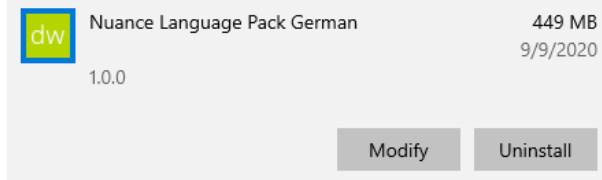
- “Apps & features” present a list of all installed apps on the lower right



- Scroll down the list (or use the search-bar) to find the entry you want to remove. Here we uninstall a German language pack used by smatrix 1.7:



- Click on the list entry to expand it, and click “uninstall”



- Windows will bring up the user account control of Windows. You need to confirm that you want to uninstall this program.
- The Uninstaller requires you to confirm “next” twice before the uninstall is completed.